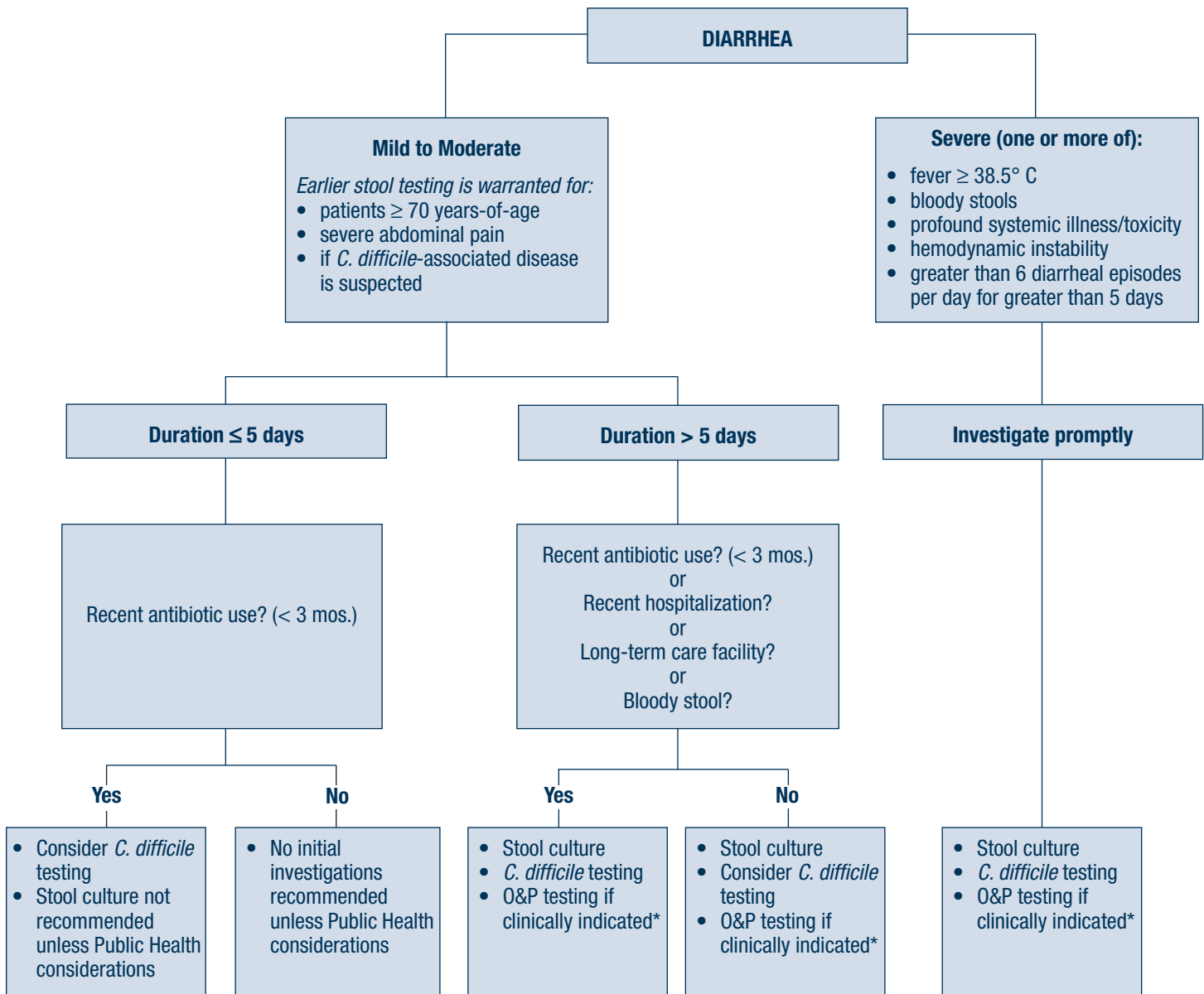


This algorithm applies to patients > 3 years-of-age presenting with suspected infectious diarrhea. It does not apply to the investigation of diarrhea in immunocompromised patients or in an outbreak situation.



**\*At-risk for parasitic infection**

- travel to or immigration from an endemic area
- prolonged diarrhea (> 2 wks)
- consumption of unsafe food or untreated water
- children attending daycare
- swimming in unsafe water
- men who have sex with men

Note: Stool for viral pathogens are not routinely tested, but should be considered when an outbreak of viral gastroenteritis is suspected. Contact local Public Health for consultation.